



ISSN : 2348-1935

RESEARCH ARTICLE

Annals of Experimental Biology
2016, 5(1):1-10

Evaluation of the Histo-architecture of the Hippocampus, Pancreas and Neurobehavioural Studies of *Zingiber officinale* on Streptozotocin Induced Diabetic Male Wistar Rats

Godam Elvis Tams^{1*}, Atumen Superior Tejiri², Owolagba GO²

¹Department of Human Anatomy, Faculty of Basic Medical Sciences, College of Health Sciences, Bingham University Karu Nasarawa State, Nigeria

²Department of Medical Laboratory Science, Usman Dan Fodio University, Sokoto, Nigeria

ABSTRACT

This study was aimed at evaluating the histological; biochemical and neurobehavioral effects of ethanolic extract of *Zingiber officinale* in streptozotocin (STZ) induced diabetic male wistar rats. Twenty five male rats were used in this study. Streptozotocin was used to induce Diabetes mellitus with a single IP injection of 55 mg/kgbw. Sustained hyperglycaemia of 200 mg/dl and above was considered diabetic. The animals were further divided into the following groups: Group A; Normal Control, Group B; Diabetic Control; Group C; (Diabetic+*Z. officinale* (200 mg/kgbw) for 14 days), Group D; (Diabetic+*Z. officinale* (200 mg/kgbw) for 21 days) and Group E; (Diabetic+Metformin (500 mg/kgbw)) orally for 21 days. The behavioral study was done as grouped using the elevated plus maze (EPM) Model. After the last day of treatment, the rats were sacrificed and blood samples collected were assayed spectrophotometrically for serum concentration of liver enzymes, intracellular antioxidants Superoxide dismutase (SOD), Glutathione peroxidase (GPx) and Malondialdehyde (MDA). The brain (hippocampus) and Pancreas were harvested fixed and processed histologically. The result showed significant increased antioxidants and reduced Malondialdehyde in *Z. officinale* treated groups (C, D) compared with diabetic control and metformin treated groups (B&E). *Z. officinale* treated groups (C&D) showed repair of neuronal cells injury caused by neuropathy. There was significant behavioural and cognitive improvement in *Z. officinale* treated group (Day 21) when compared with values obtained for the Diabetic control group. The islets of Langerhans in the Pancreas showed considerable improvement in β cell mass in the ginger treated groups when compared with Diabetic control group.

Keywords: Tea, Antioxidant, Flavonoids, Polyphenols, Tannins

INTRODUCTION

Diabetes mellitus is a group of metabolic diseases characterized by hyperglycemia and dyslipidemia which results from defects in both insulin secretion and/or insulin action and is a complex endocrine-metabolic and multi-factorial disorder according to the World Health Organization [1] over 422 million people around the world have diabetes. The number of people with diabetes has risen from 108 million in 1980 to 422 million in 2014. Global prevalence of diabetes among adults over 18 years of age has risen from 4.7% in 1980 to 8.5% in 2014. Diabetes prevalence has been rising more rapidly in middle and low income countries. In 2012, an estimated 1.5 million deaths were directly caused by diabetes and another 2.2 million deaths were attributable to high blood glucose. More than 14 million people in the African region are diabetic and by 2040, this figure would have doubled. In the year 2015, there were more than 1.56 million cases of diabetes in Nigeria. The total adult population (20-79) afflicted with diabetes was 82,869 and 40,815 reported deaths associated with diabetes. The disease is associated with reduced quality of life and increased risk factors for mortality and morbidity. Long-term hyperglycemia is an important factor in the development and progression of micro and macro-vascular complications, which include neuropathy (diabetic neuropathy), nephropathy, cardiovascular and cerebrovascular diseases [2].

The use of herbal medicine alongside prescription drugs for its management is quite common. Ethno-botanical surveys of plants traditionally used in diabetes management in different parts of Nigeria have been carried [3]. The

major link between the use of traditional medicine and traditional plant foods is that their uses are community-based and indigenous. Each community has its own peculiar approach to health and diseases even at the level of ethno-pathological perception of diseases and therapeutic behaviors. This gives indigenous knowledge in agriculture, medicine and health its diverse and pluralistic nature. The implication is that success for use of any indigenous plant foods that possess anti-diabetic potential when incorporated into the family diets, could offer sustainable health benefits to the community/consumers of such plant foods [4].

Twenty-five indigenous diets as consumed had anti-diabetic effects. Their anti-diabetic effects were caused by their bioactive compounds. The bioactive compounds or secondary metabolites are the non-nutrient components in plant foods. These chemical compounds are found in different classes and parts of plant foods in varying amounts [4,5]. They are more concentrated in plant storage organs (leaves and seeds) than other parts of the plants. *Zingiber officinale* one of the 27 species of spices, condiments, grain legumes which was evaluated in this study and is believed it has potential to alleviate or improve neuropathological conditions associated with diabetes mellitus especially memory and anxiety expressed by diabetic subjects.

MATERIALS AND METHODS

Reagents, materials and equipment

The Reagents used were 10% formal calcium, 10% formal saline, methylated spirit, chloroform, 95% Ethanol, streptozotocin (Sigma chemicals St. Louis, MO, USA), ALT, AST and ALP diagnostic kit (Randox–United Kingdom), Superoxide Dismutase Assay kit (SOD), Glutathione Peroxidase Assay kit (GPx) and Malondialdehyde (MDA) (North West life Science Specialties LLC). The materials used are cages, plastic containers, weighing balance, standardized pellet (Vital Feeds Limited Grand cereals Jos Plateau State), tap water, distilled water, normal saline, needles, syringes, oral cannulas, gloves, lab coat, dissection kit, beakers, measuring cylinders, plain blood bottles, water bottles, reagent bottles, cotton wool, tissue paper, glass slide, coverslip, ice blocks, fridge, organ bottles, *Zingiber officinale* (Ginger), surgical blades, Elevated Plus Maze (EPM).

The equipment used were Soxhlet extraction apparatus, water bath, Laboratory kiln set at 105°C, dryer, extraction thimbles, spectrophotometer, micropipette, centrifuge, microscope, blender, glucometer, glucometer strips

Collection and extraction of plant material

Z. officinale was purchased from Mararaba market, Nasarawa State, Nigeria. It was chopped and shade dried. After drying, it was powdered using a blender. 1090 g of the powdered *Z. officinale* was extracted in 1.5 L of 95% ethanol using a Soxhlet extractor. This was filtered using a Whatman filter paper (24 mm). The filtrate was dried in a laboratory water bath set at 80°C and total yield of 43 g was obtained per 1090 g of the powdered ginger. Extract was kept in an air tight bottle. It was reconstituted in appropriate volume of distilled water for administration.

Animal procurement

Thirty Five (35) male adult Wistar rats were procured from National Veterinary Research Institute (NVRI) Vom in Jos-South Local Government area of Plateau State, Nigeria.

Animal care and conditioning (handling)

The Wistar rats weighed between 160-180 g. They were kept in well ventilated cages cushioned with saw dust in the animal house of Bingham University, Karu, Nasarawa state, Nigeria. They were acclimatized for 2 weeks, and kept under standard conditions of room temperature 35.5-37.0°C and 12:12 h light and dark cycle respectively. The Wistar rats were fed with standardized pellet (Vital Feed Limited Nyanya, Nasarawa) and tap water *ad libitum*. The rat cages were regularly cleaned and saw dust regularly changed (every day).

Induction of experimental diabetes

The animal models used in the test were assessed to establish their baseline blood glucose levels to ensure that all were normoglycaemic before the experiment was carried out. Type 1 diabetes was induced intraperitoneally in thirty Wistar rats which were fasted overnight prior to Streptozotocin (STZ) administration. STZ was dissolved in 0.1 mmol/l sodium citrate buffer, pH 4.5, Sigma Chemical Co., St. Louis, MO, USA. The concentration of the application solution was 55 mg/Kg STZ/0.5 ml sodium citrate buffer. Blood samples were collected after 72 h after Streptozotocin injection and blood glucose level was determined using an ACCU-CHEK Glucometer. Streptozotocin treated wistar rats with fasting blood glucose level at 200 mg/dl and above were considered diabetic and included in the study.

Experimental protocol

Twenty male diabetic wistar rats and five normoglycaemic male wistar rats were randomly selected and divided into five groups of five animals each as follows:

The crude extract of *Zingiber officinale* and metformin were administered once daily early in the morning (6 am) for a period of three weeks respectively except for Group C which was sacrificed on the 15th day. The vehicle used for administering treatment was normal saline using a 2 ml syringe and an oral cannula at the tip. Group A was given 2 ml of normal saline for 21 days and was sacrificed on the 22nd day. Group B was given 2 ml of normal saline and was sacrificed on the 22nd day. Group C was treated with *Z. officinale* and was sacrificed on the 15th day. Group D was treated with *Z. officinale* and was sacrificed on the 22nd day. Group E was treated with metformin and was sacrificed on the 22nd day. All groups were given treatment via oral intubation.

Cognitive and neurobehavioral test

On the 7th day (training), 14th and 21st after diabetes confirmation, the rats were assessed for cognitive and behavioral parameters in the Elevated Plus Maze (EPM). The duration for the test was 5 min (300 s). The test was repeated for five (5) days for better evaluation of learning speed in all experimental groups (6).

Anxiety test

Each Wistar rat was placed on the central platform with their heads oriented towards an Open Arm (OA). The frequency of entries into the OAs and Enclosed Arm (EAs) were scored. An arm entry is defined as all 4 paws entering an arm, and an arm exit is defined as 2 paws leaving an arm. Other parameters like grooming, urination, defecation and rearing (6).

Learning and memory test

A line was drawn to divide the EA into 2 equal parts. On days 2 to 5, the time it took for each rat to cross the line in the EA (transfer latency) was measured. The rat was initially placed at the end of an OA and allowed to explore for 300 s. The rat was required to have its body and 4 paws cross the line in the EA; if the rat did not cross the line after the time limit, transfer latency was recorded as 300 s.

After crossing the line, the rat was allowed to complete the time duration exploring the apparatus. Learning was defined as reduced transfer latency on day 2 compared with day 1.

(Over the test period, experimental rats should typically cross the line in the EA more quickly on day 2 than on day 1), (6).

Collection of blood and preparation of sera samples

After the last treatment was given to animals, they were euthanized with chloroform soaked in cotton wool placed in anesthetic box covered with lid. Blood was collected from each animal from all groups through cardiac puncture into plain sterilized centrifuge bottles and allowed to clot. The serum was separated by centrifugation at 3000 rpm for 45 min and collected in sample bottles for determination of serum liver enzymes activities and oxidative stress markers.

Biochemical analysis

The serum that was centrifuged was analyzed in Department of chemical Pathology Lab, Ahmadu Bello University Teaching Hospital, Shika, Zaria spectrophotometrically for to quantify liver enzymes and oxidative stress markers.

Histological analysis

Tissue sample harvested were immersed in 10% formal calcium solution (brain) and 10% formal saline (other tissues) in tissue bottles. Samples were then taken to the Histological Lab, Department of Anatomy, Ahmadu Bello University, and Zaria for preparation of slides and staining.

Statistical analysis

All of the data are expressed as mean \pm SD. Statistical significance between more than two groups was tested using one-way ANOVA followed by the Duncan's post hoc test as appropriate using a computer-based fitting program (SPSS/15). Differences were considered to be statistically significant when $P < 0.05$ (Tables 1-6).

RESULTS

Morphological results

Table 1: Shows treatment and duration of groups.

Groups	Treatment	Duration
A	Normal Control+Normal Saline orally	21 Days
B	Diabetic Control+Normal Saline orally	21 Days
C	Diabetic+Z. <i>officinale</i> (200 mg/kg bw) orally	14 Days
D	Diabetic+Z. <i>officinale</i> (200 mg/kg bw) orally	21 Days
E	Diabetic+Metformin (500 mg/kg bw) orally	21 Days

Table 2: Mean body weight (g) of Wistar rats. Values expressed as mean \pm standard deviation (SD) of the weight of Wistar rats during the experiment in grams. Values with superscript in a column are significantly different ($p < 0.05$). A: Normal Control; B: Diabetic Control; C: Diabetes+Z. *officinale* (14); D: Diabetes+Z. *officinale* (21); E: Diabetes+Metformin. Different alphabets show level of significance.

Groups (n=5)	Day 1	Day 7	Day 14	Day 21
A	173.20 \pm 5.06	186.60 \pm 6.34	205.20 \pm 8.16	218.60 \pm 7.26
B	170.80 \pm 6.61	149.20 \pm 5.06 ^d	138.60 \pm 8.01 ^d	125.80 \pm 5.89 ^d
C	166.80 \pm 6.76	139.00 \pm 7.84 ^{c,d}	158.00 \pm 3.39 ^c	-
D	171.80 \pm 4.96	148.20 \pm 6.05 ^d	162.40 \pm 7.73 ^b	171.40 \pm 2.60 ^b
E	169.00 \pm 5.65	148.20 \pm 4.14 ^d	168.00 \pm 5.78 ^b	168.00 \pm 5.78 ^c

Blood glucose results

Table 3: Mean blood glucose level (mg/dl). Values expressed as mean \pm SD of the Blood glucose level (mg/dl) of Wistar rats during the experiment in grams. Values with superscript in a column are significantly different ($p < 0.05$). A: Normal Control; B: Diabetic Control; C: Diabetes+Z. *officinale* (14); D: Diabetes+Z. *officinale* (21); E: Diabetes+Metformin. Different alphabets show level of significance.

Groups (n=5)	Day 1	Day 7	Day 14	Day 21
A	68.40 \pm 5.81	68.60 \pm 4.82	73.40 \pm 6.73	73.80 \pm 4.08
B	305.60 \pm 118.09 ^b	322.80 \pm 16.20 ^c	442.60 \pm 19.85 ^d	518.60 \pm 24.43 ^d
C	366.40 \pm 47.72 ^c	328.40 \pm 49.26 ^c	230.20 \pm 21.28 ^b	-
D	451.60 \pm 37.62 ^d	403.00 \pm 38.41 ^d	351.40 \pm 27.29 ^c	264.00 \pm 34.61 ^b
E	408.80 \pm 27.99 ^d	271.80 \pm 15.91 ^b	235.40 \pm 11.71 ^b	208.40 \pm 11.30 ^b

Table 4: Mean values of MDA, GPx and SOD. Values expressed as mean \pm SD of the free radicals and antioxidants of Wistar rats. Values with superscript in a column are significantly different ($p < 0.05$). Different alphabets show level of significance. A: Normal Control; B: Diabetic Control; C: Diabetes+Z. *officinale* (14); D: Diabetes+Z. *officinale* (21); E: Diabetes+Metformin. MDA: Malondialdehyde; GPx: Glutathione Peroxidase; SOD: Superoxidase Dismutase.

Groups (n=5)	MDA (nmols/mg protein)	GPx (μ g/ml)	SOD (U/ml)
A	478.28 \pm 23.87	66.18 \pm 2.29	29.10 \pm 1.43
B	949.44 \pm 30.62 ^d	29.82 \pm 1.03 ^d	15.12 \pm 0.78 ^d
C	679.32 \pm 11.58 ^c	58.42 \pm 0.71 ^{b,c}	22.10 \pm 5.88 ^{b,c}
D	560.38 \pm 19.17 ^b	66.11 \pm 2.80 ^a	28.64 \pm 1.30 ^b
E	667.52 \pm 11.41 ^{b,c}	44.03 \pm 6.44 ^c	26.86 \pm 1.65 ^{b,c}

Behavioral performance

Table 5: Mean values of Grooming, rearing, defecation, urination, CAE and OAE. Values expressed as mean \pm SD of the behavioral parameters of Wistar rats. Values with superscript in a column are significantly different ($p < 0.05$). Different alphabets show level of significance. A: Normal Control; B: Diabetic Control; C: Diabetes+Z. *officinale* (14); D: Diabetes+Z. *officinale* (21); E: Diabetes+Metformin. CAE: Closed arm entry; OAE: Open arm entry.

Groups	Grooming	Rearing	Defecation	Urination	CAE	OAE
A	4.64 \pm 0.65	6.08 \pm 1.47	0.32 \pm 0.17	0.00	1.92 \pm 0.75	0.56 \pm 0.51
B	3.72 \pm 1.46 ^c	2.84 \pm 1.30 ^c	2.84 \pm 0.79 ^d	1.00 \pm 0.46 ^d	0.28 \pm 0.17 ^d	0.00 ^d
C	2.90 \pm 1.63 ^b	0.80 \pm 0.44 ^d	2.30 \pm 1.44 ^c	0.00 ^a	0.70 \pm 0.44 ^c	0.00 ^d
D	4.96 \pm 1.32 ^a	4.20 \pm 1.97 ^{b,c}	0.76 \pm 0.26 ^b	0.36 \pm 0.16 ^{a,b}	1.20 \pm 0.66 ^b	0.00 ^d
E	1.88 \pm 0.41 ^d	3.72 \pm 0.48 ^{b,c}	1.16 \pm 0.49 ^{b,c}	0.24 \pm 0.16 ^{a,b}	1.16 \pm 0.16 ^{b,c}	0.44 \pm 0.21 ^b

Table 6: Mean values of Transfer Latency. Values expressed as mean \pm SD of the transfer latency of Wistar rats. Values with different superscript in a column are significantly different ($p < 0.05$). Different alphabets show level of significance. A: Normal Control; B: Diabetic Control; C: Diabetes+Z. *officinale* (200 mg/kgbw) (14); D: Diabetes+Z. *officinale* (200 mg/kgbw) day 21; E: Diabetes+Metformin (500 mg/kgbw).

Groups (n=5)	Day 1	Day 2	Day 3	Day 4
A	12.00 \pm 4.52	14.20 \pm 6.01	9.20 \pm 3.11	10.40 \pm 1.51

B	248.80 ± 114.48 ^d	249.60 ± 112.69 ^d	253.60 ± 103.75 ^d	255.60 ± 99.28 ^d
C	165.80 ± 122.51 ^c	137.20 ± 102.52 ^c	127.60 ± 100.82 ^c	104.80 ± 86.09 ^c
D	119.80 ± 100.80 ^b	113.60 ± 104.21 ^{bc}	103.80 ± 109.71 ^{bc}	80.20 ± 122.92 ^{bc}
E	240.40 ± 54.96 ^{bc}	83.00 ± 1.58 ^b	44.20 ± 1.92 ^b	18.20 ± 0.83 ^b

Histological results

Pancreas

The normal control group (Plate 1) shows normal pancreatic islets β cell of Langerhans and no observable pancreatic damage. Diabetic control group (Plate 2) shows necrotic damage to the pancreatic islet β cells. *Zingiber officinale* Diabetic treated group (Day 14) (Plate 3) shows restoration of pancreatic islet β cells. *Z. officinale* Diabetic treated group (Day 21) (Plate 4) shows restoration of pancreatic islet β cells while Metformin treated diabetic group (Plate 5) shows degenerated pancreatic β cells.

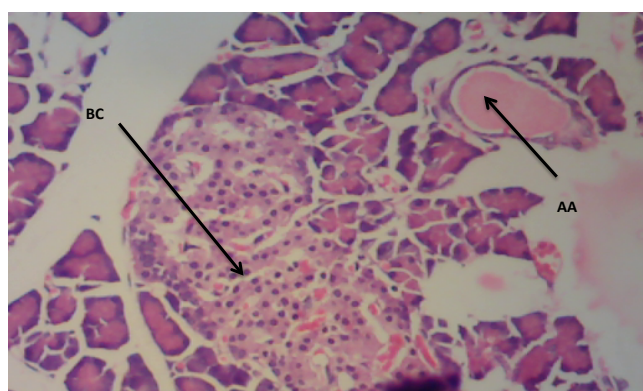


Plate 1: Photomicrograph of pancreatic sections of Group A, normal pancreatic β cells (BC) and blood vessels (AA) (H&E) X100.

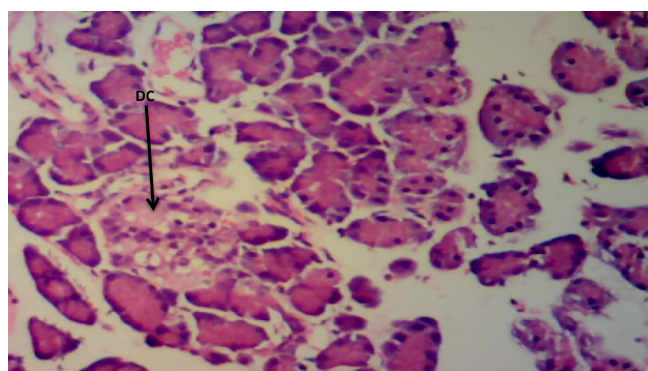


Plate 2: Photomicrograph of pancreas section of group B, destroyed pancreatic β cells (DC) (H&E) X100.

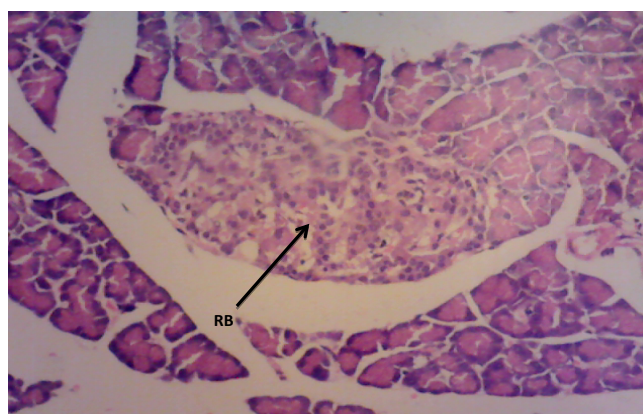


Plate 3: Photomicrograph of pancreas section of Group C, restored pancreatic β cell mass (RB) (H&E) X100.

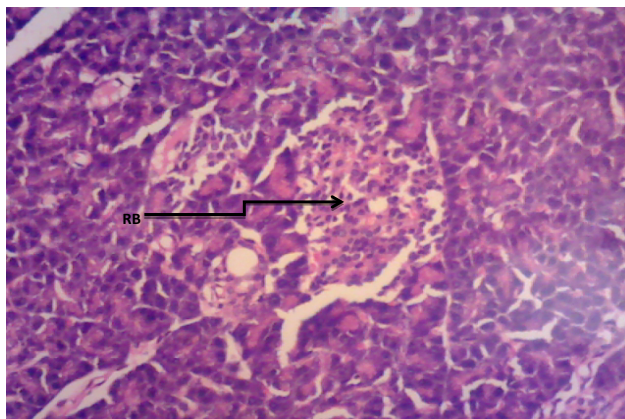


Plate 4: Photomicrograph of pancreas section of Group D. There is restoration of pancreatic β cell mass (RB) (H&E) X100.



Plate 5: Photomicrograph of pancreas section of group E. Necrotic pancreatic β cell mass (N) (H&E) X100.

Hippocampus

Haematoxylin and eosin

The Normal control group (Plate 6) shows normal neuronal cells with distinctive cell layers, Diabetic control group (Plate 7) shows increased pericellular spaces and chromatolysis signifying neuronal cell damage or neurodegeneration, *Z. officinale* treated diabetic group (Day 14) (Plate 8) shows restoration of neuronal cells with distinctive characteristic cell layers, *Z. officinale* treated diabetic group (Day 21) (Plate 9) shows restoration of neuronal cells with neuronal cell and layers and Metformin treated diabetic group (Plate 10) shows partial restoration of neuronal cells cell layers.

Bielschowsky's silver stain

The Diabetic control group (Plate 11) shows distorted cell layer and degenerated pyramidal cells, *Z. officinale* treated diabetic group (Day 14) (Plate 12) shows distinctive cell layer and preserved pyramidal cells, *Z. officinale* treated diabetic group (Day 21) (Plate 13) shows distinctive cell layer and more preserved pyramidal cells, Metformin treated diabetic group (Plate 14) shows degenerated pyramidal cells and distorted cell layer.

DISCUSSIONS

Histology studies

Pancreas

The Pancreas is a mixed exocrine and endocrine gland. The β cells in the endocrine pancreas are responsible for the production of insulin which keeps the body glucose level in a normoglycaemic state. When blood glucose is high, insulin is secreted from the β cells which help the cells to utilize the glucose in the blood. STZ is used for the induction of T1DM because its toxicity is specific to the β cells in the endocrine pancreas. It destroys the β cells causing no secretion or a reduction in the secretion of insulin. The pancreas from the normal control group (Plate 1) shows normal pancreatic islet cell mass with normal β cells which explains normoglycemia in the normal control (A), Plate

2 for Group B shows necrosis of the pancreatic islet cells and a complete reduction of the β cells which explains the extremely high blood glucose level in the diabetic group (B). Plate 3 shows the restoration of the pancreatic islet cells and a normal β cell mass and there was partial regeneration of the pancreatic islet cells in Plate 4. Plate 3 and 4 are diabetic groups treated with *Zingiber officinale* which explains the gradual decrease in the blood glucose level in those groups and this was in agreement with (6) who revealed that ginger shown to modulate insulin release in rats pancreatic β -cells which was due to its active component 6-gingerol. The gradual reduction caused the gradual increase in the weight also because they were able to gradually utilize the glucose in the blood. Plate 5 shows the complete destruction of the β cells in the pancreatic islet cells. *Z. officinale* had regenerative effects on the pancreas because there was restoration of the β cells in the diabetic group treated with it.

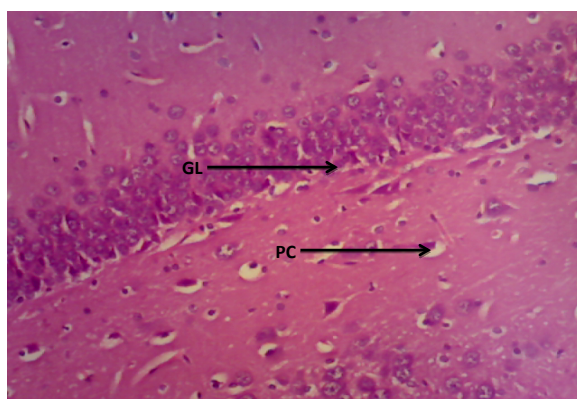


Plate 6: Photomicrograph of the hippocampus of group A, granular cell layer (GL) and normal pyramidal cell (PC) (H&E) X100.

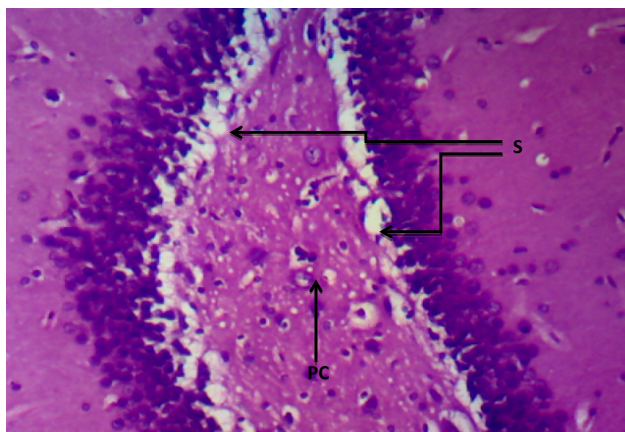


Plate 7: Photomicrograph of the hippocampus of group B, degenerated pyramidal cell (PC), and reduced neuronal cell layer (S) (H&E) X100.

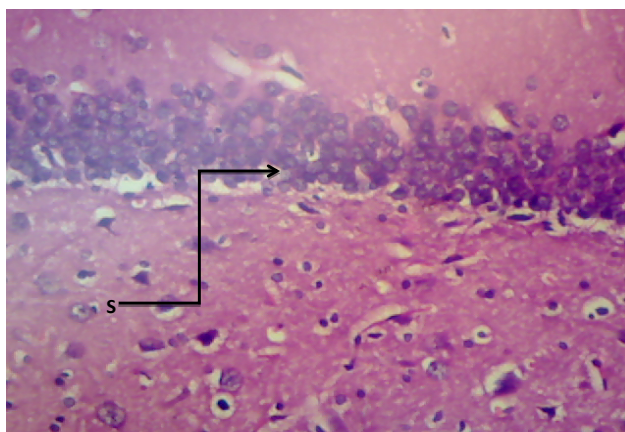


Plate 8: Photomicrograph of the hippocampus of group C, preserved cell layer (S) (H&E) X100.

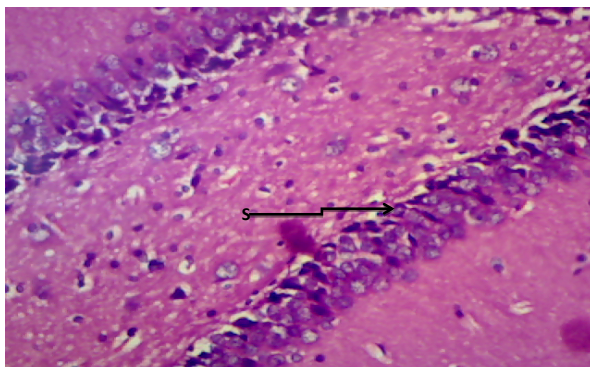


Plate 9: Photomicrograph of the hippocampus of group D, showing preserved neuronal cell layer (S) (H&E)X100.

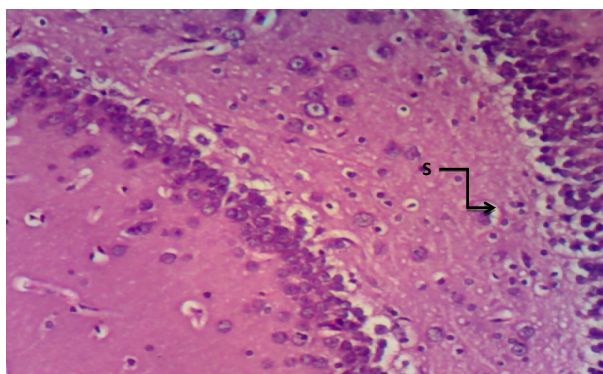


Plate 10: Photomicrograph of the hippocampus of group E, more pericellular spaces indicating cell damage (S) (H&E) X100.

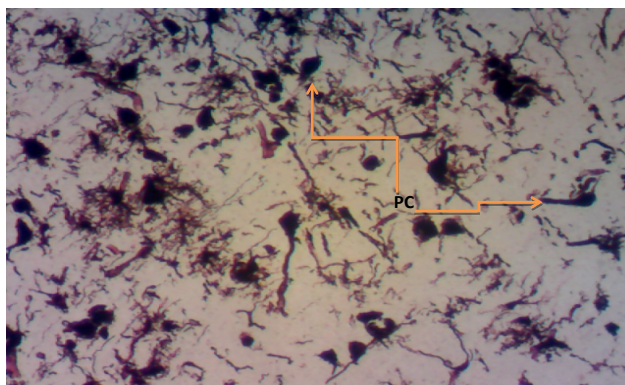


Plate 11: Photomicrograph of the hippocampus of group B showing degenerated pyramidal cells (PC). Bielschowsky silver stain X100.

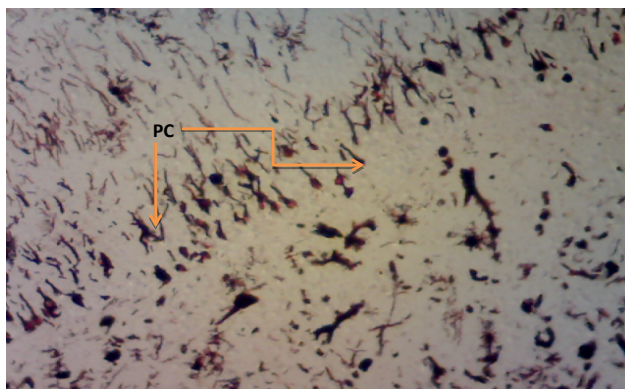


Plate 12: Photomicrograph of the hippocampus of Group C demonstrating preserved pyramidal cells (PC). Bielschowskys silver stain X100.

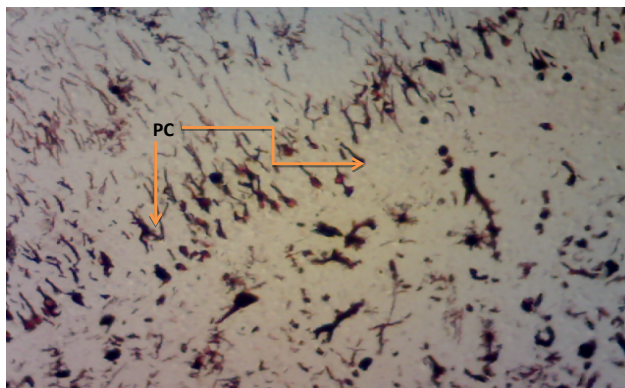


Plate 13: Photomicrograph of the hippocampus of group D showing more preserved pyramidal cells (PC). Bielschowsky's silver stain X100.

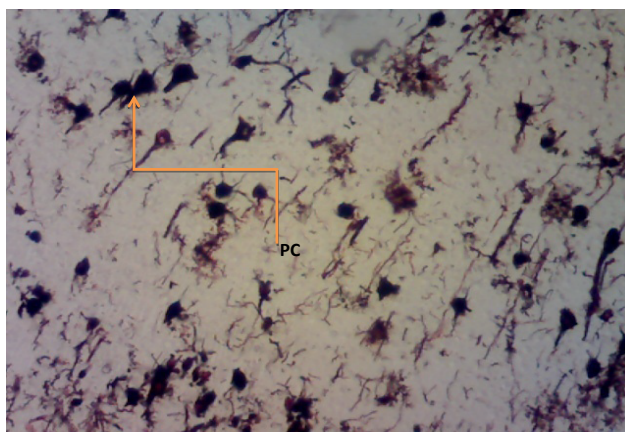


Plate 14: Photomicrograph of the hippocampus of group E. Degenerated pyramidal cells and distortion of the cell layer (PC). Bielschowsky's silver stain X100.

Hippocampus

The hippocampus forms part of the limbic system and functions majorly in long term memory and spatial navigation. Damage in any cell in the hippocampus can cause gross effects on the learning process of the individual. Astrocytes are most numerous glial cells in the brain and they help in the filling of spaces forming glial scars caused by neuronal damage and also help to repair the damaged cells that cannot be regenerated and a reduction in the number of these glial cells that help keep neuronal cells connected will cause a deficit in cell to cell connection. Plate 6 shows the normal hippocampus showing the different cell layers with no neuronal injury which is in support with the biochemical findings on free radicals and antioxidants. Plate 2 (Diabetic control) shows neuronal injury which was prominent throughout the granular layer which is in support with the biochemical analysis done on free radicals and antioxidants which shows elevated levels of free radicals and reduced levels of antioxidants proving low defense against free radicals which caused an increase in neurodegeneration and this was evident in the behavioral study. Diabetic control (Plate 11) shows degenerated pyramidal cells with short and disconnected processes and also has very few astrocytes. Plate 8 (Diabetes+ *Z. officinale* 14) preserved pyramidal cells but Plate 14 reveals that astrocytes were diminished in this group. Plate 9 shows preserved neuronal cells as compared to that of Plate 7, the astrocytes seen in Plate 13 were numerous compared to that of the other groups which confirms the neuroprotective effect of *Z. officinale* on brain cell and this finding is in agreement with Aggarwal; El-Akabawy and El-Kholy [6,7], which observed that the administration of *Z. officinale* to diabetic rats increased astroglial response to injury which improved neurogenesis.

Behavioral performance

The EPM is a widely accepted test in the study of anxiety in rodents and other animal models and is also sensitive enough to detect deficits in associative learning and memory in rats. The EPM test is based on the spontaneous exploratory behavior of rodents, and their natural aversion to the open arms caused by fear and anxiety [6]. The EPM test reveals increased anxiety in diabetic control group compared to the normal control and the diabetic Ginger treated groups. The entry into the open arm was significantly different in the diabetic group when compared to the

normal control. The frequency of grooming between normal control and diabetic group was significantly different at ($P<0.05$) and was significantly different ($P<0.05$) with the other parameters. The entry into the enclosed arm of the diabetic groups was significantly different ($P<0.05$) with the control group. The frequency of defecation observed in the diabetic control (B) and *Z. officinale* treated group (C) was significantly different from the normal control with significant values ($P<0.05$) showing positive reduction in cognitive impairment because of reduced frequency of defecation, anxiety, increased grooming behavioural activities in *Z. officinale* treated group (D).

Learning and memory in the EPM test is defined as Transfer Latency which is the time it takes the rat to leave the open arm to cross the line dividing the enclosed arm on the second day. The learning speed is observed as the time it took the wistar rat to go to the enclosed arm on the second day which is supposed to decrease after the first day. Subsequently the Transfer Latency is supposed to reduce. The EPM learning and memory measures from Day 2 to Day 5 trials reveals that the diabetic control group differed significantly ($P<0.05$) from diabetic Ginger treated group (D) The Metformin treated group (E) was not significant when comparing with Group D ($P<0.05$). The learning process and memory of the *Z. officinale* treated diabetic group (D) was not comparable with that of the normal control but show significant similarities with the Metformin treated group. The *Z. officinale* treated diabetic group (C) was significantly different from the normal control on Day 2 to 5. *Z. officinale* treated diabetic group (D) was not significantly different ($P<0.05$) from the Metformin treated group (E). The new findings of this study showed that *Z. officinale* treatment improved the learning process and memory of the Diabetic Wistar rats when compared to the diabetic control and had the same cognitive speed with that of the normal control group.

CONCLUSION

From this study *Zingiber officinale* helped in the retaining the weights of the diabetic treated Wistar rats when compared with that of the diabetic control group and increased intracellular antioxidants which helped in the mopping out of free radicals that causes damage to the neuronal cells and pancreatic islet β cells thereby improving β cells mass in the islets of Langerhans and neuronal cells in the hippocampus in *Z. officinale* treated group (day 14 and day 21) as compared to the group treated with the standard drug.

REFERENCES

- [1] WHO Report of a WHO Consultation Part 1., *Diagnosis and Classification of Diabetes Mellitus*, **1999**. p. 2-3.
- [2] International Diabetes Federation (IDF)., *Diabetes Atlas*, **2015**. 7th edition.
- [3] Soladoye, M.O., Chukwuma, E.C., Owa, F.P., *J. Nat. Prod. Plant Resour*, **2012**. 2: p. 60-72.
- [4] Elizabeth, A., Udentia., Ikemefuna., Obizoba, C., Oluwafemi, Oguntibeju, O., *Antioxidant-Antidiabetic Agents and Human Health*, **2014**. p. 70-83.
- [5] Pellow, S., Chopin, P., File, S.E., Briley, M., *Journal of Neuroscience Methods*, **1985**. 14: p. 149-167.
- [6] Aggarwal, B. B., *Ann Rev of Nutr*, **2010**. 30: p. 173-199
- [7] El-Akabawy, G., and El-Kholy, W., *Annals of Anatomy*, **2014**. 196: p. 119-28